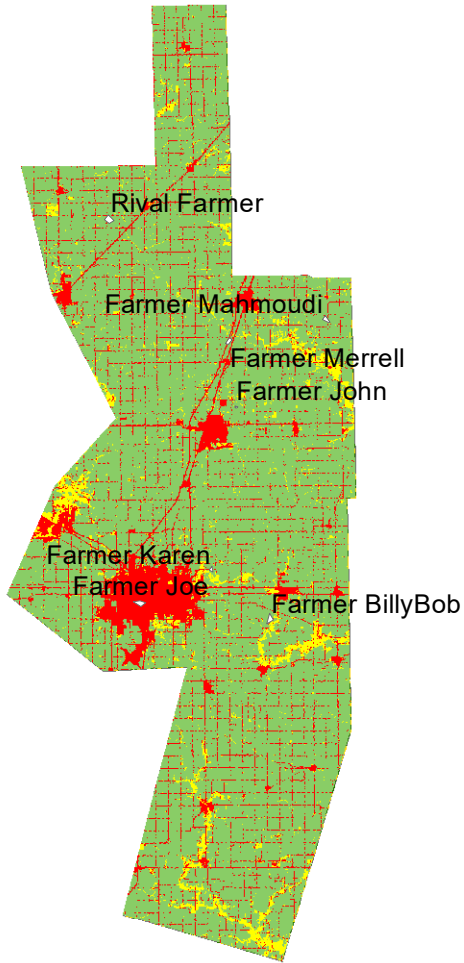
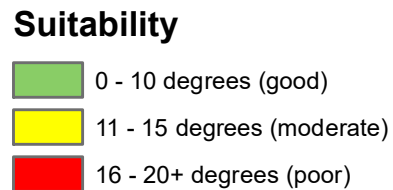
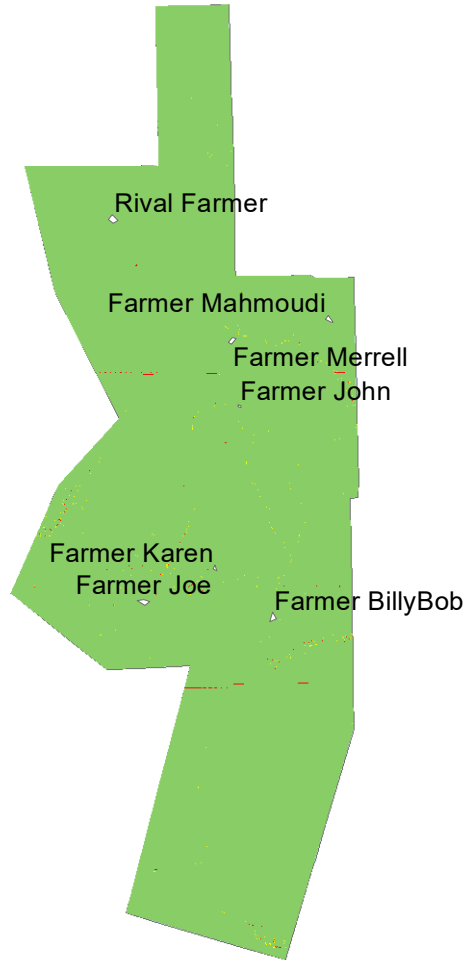


**Figure 4a. Pumpkin Growing Suitability of Rowan County, IL
According to Farmer Rittle**

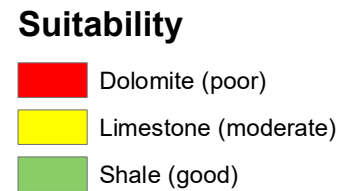
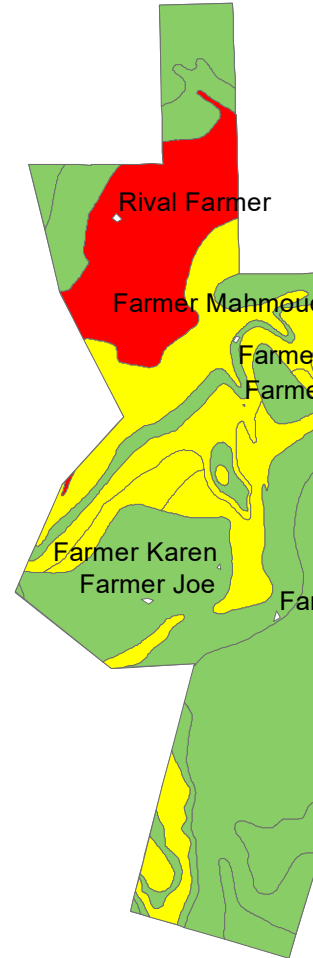
Landcover Type



Elevation Slope



Geology Type



Precipitation

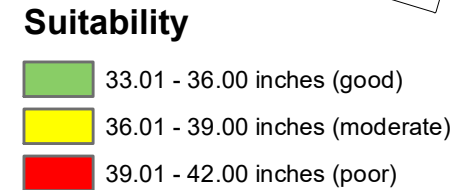
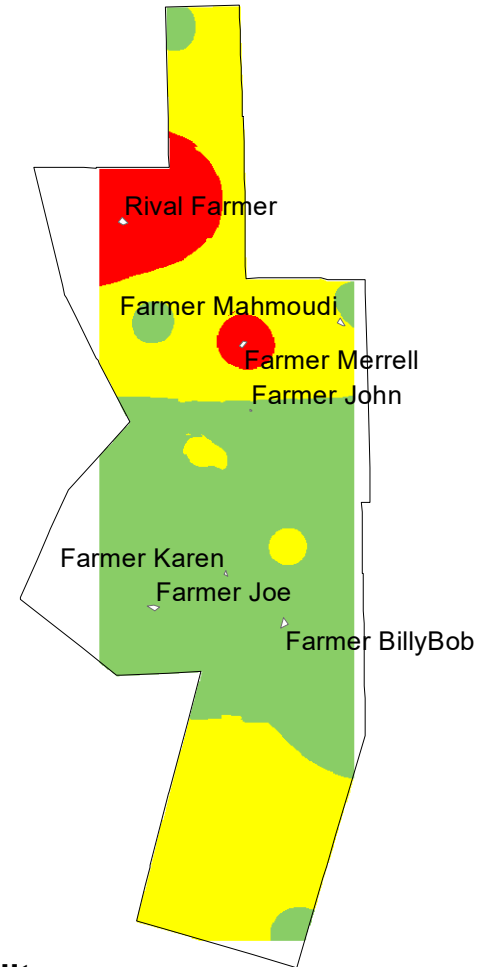
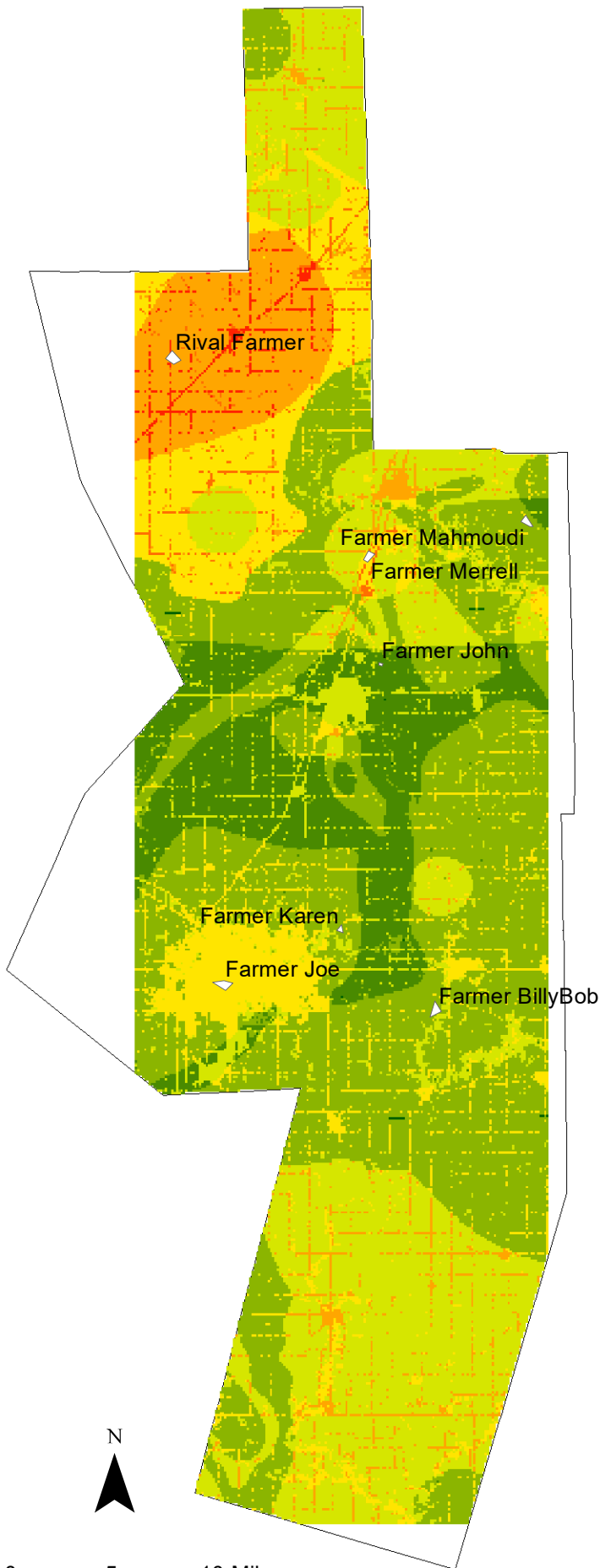


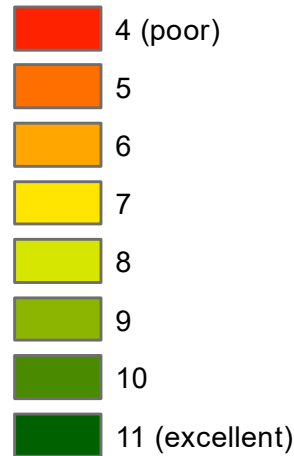
Figure 4b. Pumpkin Growing Suitability of Rowan County, IL According to Farmer Rittle



A ranking system was devised for pumpkin growing suitability that examined landcover type, slope, geology, and precipitation.

For each of the four categories, good pumpkin growing conditions were assigned the value of 3 in a raster, moderate conditions were assigned 2, and poor conditions were assigned 1. These assigned values for each category were then added into a single raster and are displayed as such. A suitability ranking of 4 is very low, while 11 is very high.

Suitability for Pumpkin Growing



The different farms have varying suitability for pumpkin growing. Farmer John is most suitable, with a ranking of 10. Farmers Karen and Mahmoudi are both ranked 9, Farmer Billybob has an 8, and Farmer Joe has a 7. Farmer Merrell ranks 6, only to be followed by Farmer Rittle with a 5.

Either Farmer Rittle is no pumpkin expert, or he foolishly farmed on unsuitable land.